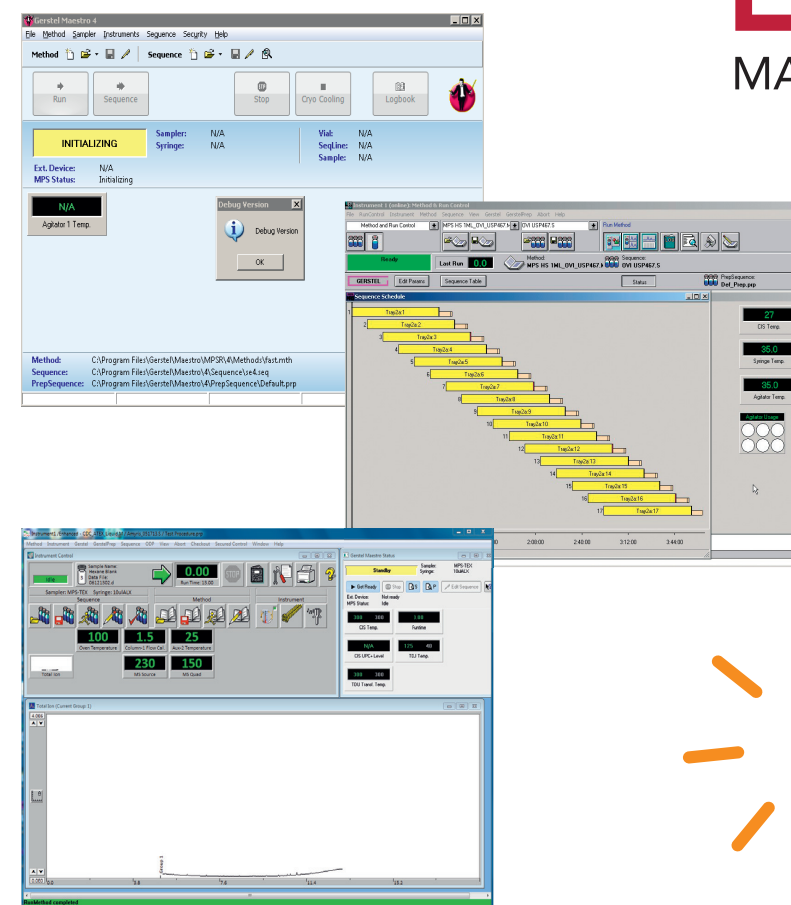


## Integrated Software Tools

Simplify Complex Tasks

- **Calibration Standard Wizard:** Create sequences for automated calibration standard preparation
- **Accurate ADD & Calculate ADD Wizard:** Accurate volume dispensing for single and multiple additions
- **Large Volume Injection (LVI) Calculator:** Determines the optimal injection speed for LVI based on solvent, CIS temperature, and carrier gas flow and automatically updates method with results
- **MAESTRO Sandwich Injection:** Tools to help build sandwich injections (GC or LC) with solvent and sample in user-defined order



**Over 30**  
sample introduction  
and preparation  
techniques!

## Supported Techniques

- Headspace Injection
- Multiple Headspace Injections
- SPME
- SPME Arrow
- Thermal Desorption
  - Sorbent packed tubes
  - Direct thermal extraction
  - Multi-desorption mode
  - Twister®
  - TF-SPME
  - Liquid matrices in  $\mu$ -vials
  - Multiple SPME injections
- Pyrolysis
  - Pulsed, Ramped, EGA, and Smart Ramped
- Dynamic Headspace (DHS)
  - Full Evaporation Dynamic Headspace
  - Multi-Volatiles Method
- Dynamic Headspace Large

### Sample Preparation

- Dilution
- Standard Addition
- Calibration Curve Preparation
- Bar Code Reading
- Filtration
- Evaporation
- Weighing
- Mixing
- Centrifugation
- Multiple SPE Options
- Sonication

### Additional Modules for Advanced Problem-Solving

- Olfactory Detection Port
- Preparative Fraction Collector
- Cryo Trap System
- Selectable 1D/2D GC for Heartcutting



### Sample Introduction

- Liquid Injection
- Cold On-Column Injection
- Large Volume Injection



## MAESTRO Software

A flexible and robust automation platform for sample preparation and sample introduction

Sample Prep by Mouse Click

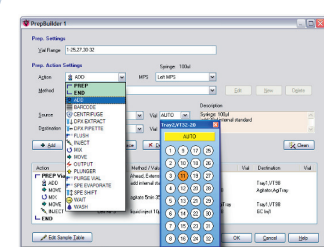
# MAESTRO Software

## Sample Prep by Mouse Click

### Quick & Easy Method Development

#### Simple User Interface

Intuitive design and graphics enable proficiency in minutes



- Effortless creation of custom sample preparation methods through the PrepBuilder function
- Easy to use graphical interface for development of sample preparation sequences
- Easy to edit and optimize sequences and parameters
- Copy and paste steps for fast and simple method development

#### Unmatched Flexibility

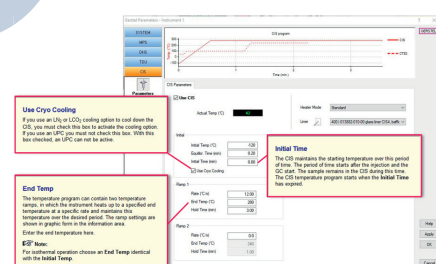
Versatile platform to customize sample preparation and edit active sequences

- Freedom to add samples at any point in the analysis sequence, accommodating last minute and high priority additions without having to stop a run
- Create custom sequences as part of, or independently of, an injection method
- Flexible options for the tasks performed as part of an injection method to fit the user's needs (e.g. SPME on-fiber derivatization before OR after sample extraction, etc.)
- Automated integration of new accessories and modules

Val	Method	Volume	Trap	Injector	Sample Name
1	liquid inject 10ul.meth	10.0	TrayL.V7950	GC 3900	Sample1
2	liquid inject 10ul.meth	10.0	TrayL.V7950	GC 3900	Sample2
3	liquid inject 10ul.meth	10.0	TrayL.V7950	GC 3900	Sample3
4	liquid inject 10ul.meth	10.0	TrayL.V7950	GC 3900	Sample4
5	liquid inject 10ul.meth	10.0	TrayL.V7950	GC 3900	Sample5
6	liquid inject 10ul.meth	10.0	TrayL.V7950	GC 3900	Sample6
7	liquid inject 10ul.meth	10.0	TrayL.V7950	GC 3900	Sample7
8	liquid inject 10ul.meth	10.0	TrayL.V7950	GC 3900	Sample8
9	liquid inject 10ul.meth	10.0	TrayL.V7950	GC 3900	Sample9
10	liquid inject 10ul.meth	10.0	TrayL.V7950	GC 3900	Sample10
11	liquid inject 10ul.meth	10.0	TrayL.V7950	GC 3900	Sample11

#### Extensive Online and Context-Sensitive Help

Guidance for successful and simplified method development and optimization

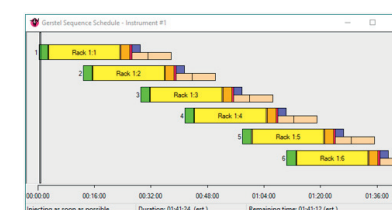


- Simple method creation and editing with extensive descriptions of parameters and special help functions by mouse-click
- In depth information through pop-ups and the integrated user manual, ensuring successful method development and optimization

### Simplified Analysis Setup

#### Advanced Sequence Scheduling and Overlapping

Maximize sample throughput and lab productivity



- Simple planning of analysis with graphical overview of sample preparation steps via the Sequence Scheduler
- Quickly view the estimated total analysis time for a batch of samples
- Easy optimization of sample preparation and analysis times for maximum throughput
- Unrestricted overlapping of custom sample preparation sequences
- Multi-sample PrepAhead for techniques like SPME and Static Headspace

#### Comprehensive Integration

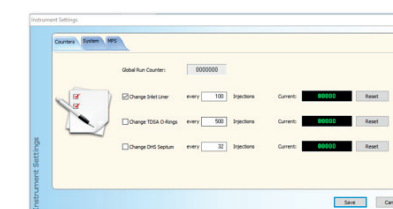
Simple system operation with one method, one sequence table, and one interface

- Operation in stand-alone mode, fully integrated with Agilent Technologies GC-MS Software, or coupled with LC-MS software
- Complete system control from sample preparation to GC-MS with just one method and one sequence table, ensuring method and data integrity
- Creation of sample preparation sequences in the same integrated platform so that instrument parameters are accessible for optimal overlapping and sequence scheduling
- Compatible with any acquisition software that is activated by external run signal



#### Maximum Reliability and Security

Catch errors before they occur and protect system components



- Validity checks at various points of method creation to catch errors before the run starts
- Automated e-mail notification of system deviations ensures that problems are quickly resolved
- Log files and service log file functions allow the user to easily track and troubleshoot issues
- Maintenance counters provide reminders to change consumable parts or perform regular maintenance tasks